

# EASTHAM RECYCLES

## Focus on "Tin Cans"



### Metal recycling

Metal recycling conserves natural resources by reducing greenhouse gas emissions.

Almost every kind of metal can be recycled again and again!

- "Tin cans"
- Aluminum foil/containers
- Redeemable cans
- Scrap metal
- Appliances
- Water heaters
- Propane tanks

### Upcoming dates

- May 17 @ 9am-noon:  
Hazardous Waste Collection  
@ the Eastham Transfer  
Station
- May 26: Memorial Day -  
Transfer Station Closed



### "Tin can" and aluminum recycling

While "tin can" is a common phrase, most modern food cans are made of steel, often coated with a thin layer of tin or a polymer lining, rather than aluminum.

#### Before tossing cans and foil in the big bin:

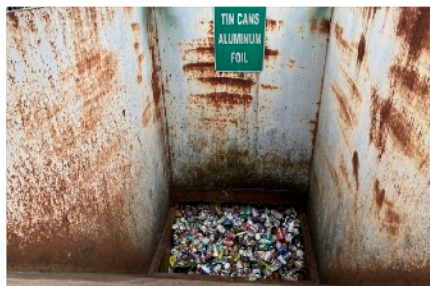
*Rinse and Prepare:* Rinse your tin cans to remove any food residue.

*Lids:* Completely remove the lids (also made of steel) and place them inside the can, then pinch the top so it closes.

*Aluminum foil/trays/containers:* Ensure it's clean, then roll it into a ball.

*Redeemables:* Put these in the bin at the other end of the recycling area! Proceeds go to Eastham Elementary!





## May Focus: Plastic Bags

### Pop quiz:

Do you know how many plastic bags per person per year Americans use on average?

## For more information

Check out these resources for more information.

- **RecycleSmartMA**  
<https://recyclesmartma.org/>
- **Eastham Transfer Station**  
<https://www.eastham-ma.gov/384/Solid-Waste->

## Contact us

The Recycling Committee is always looking for volunteers as well as members. Contact us via the Eastham Town webpage at:  
<https://www.eastham-ma.gov/611/Recycling-Committee>

- May 20 @ 5pm: Recycling Committee Meeting at the Eastham Library

## Reduce your consumption of metal

- Rather than using foil wrap and disposable pans, use reusable food containers with lids.
- Repair household appliances rather than buying new.
- Buy for durability: Whenever possible, choose a product that you will use for a long time and be able to maintain and repair should it be necessary. It may cost a bit more up front, but it will save waste and money in the long run.
- Borrow, lend, share: Consider sharing tools and household equipment (ladders, hammers, garden tools) with friends and neighbors
- Sell or give away working items you no longer need rather than throw them out.

## Metal recycling

The Institute of Scrap Recycling Industries (ISRI) reports that recycling metal may cut greenhouse gas emissions by 300 million to 500 million tons.

## Steel recycling

- 92% of steel is recycled in the US each year. That's more than paper, glass and plastic combined.
- For every ton of steel recycled, 2500 pounds of iron ore, 1400 pounds of coal and 120 pounds of limestone are conserved.
- Since 1990, technical advances in steel production have reduced energy intensity by 27% and CO2 emissions by 33% per ton of steel produced.
- Steel is the world's most recycled material, with 80 million tons recycled annually in the United States alone.

From <https://stispfa.org/>

